

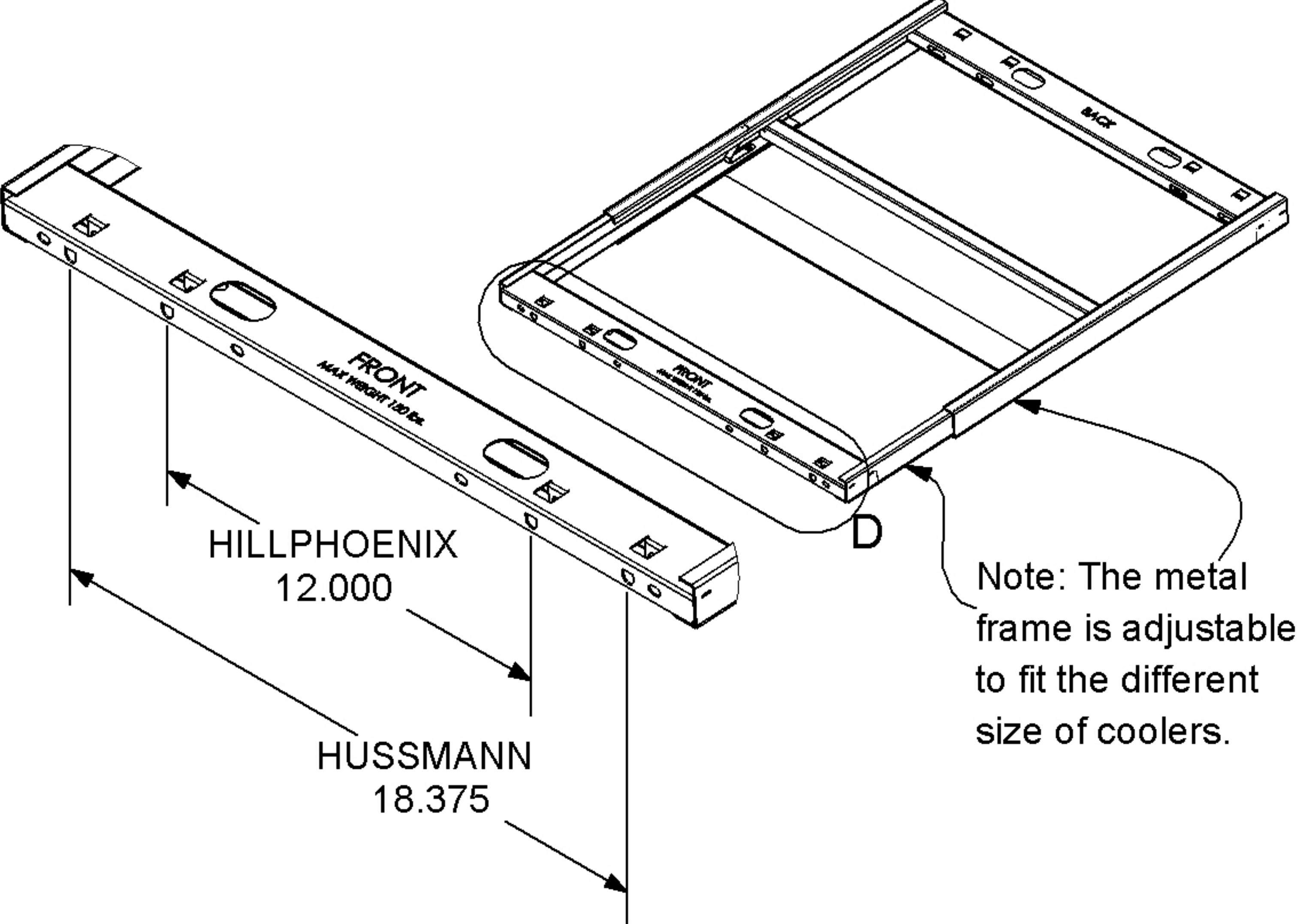
MODOSHELF WELL RACK

Installation Instructions

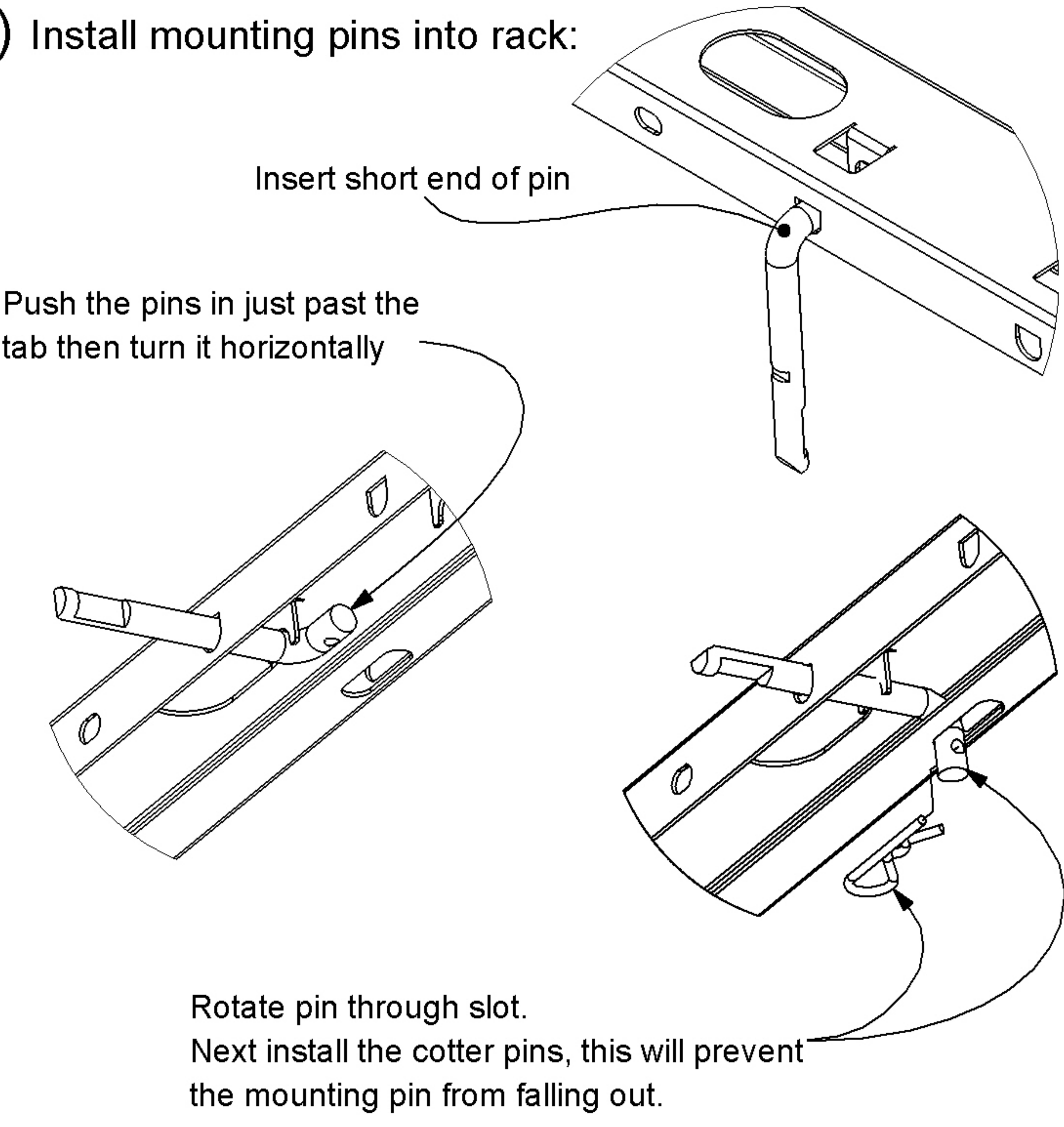
The ModoShelf Well Rack is intended to REPLACE the wire grate in the bottom of a cooler. Remove wire grate prior to installation; but DO NOT remove plastic plenum covers or metal pans underneath the wire grate.

1) Determine the cooler manufacturer:

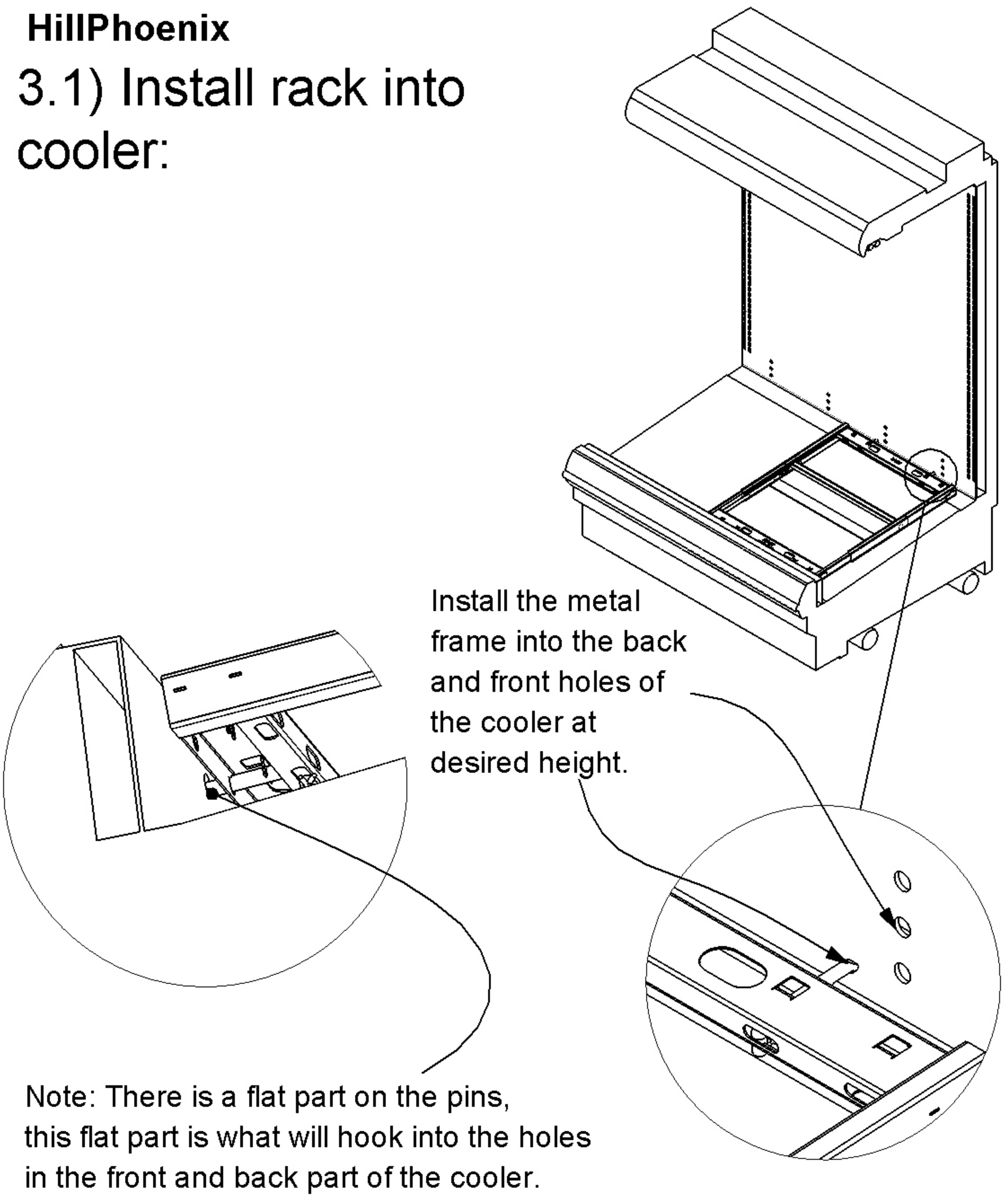
HillPhoenix: utilize INSIDE holes for mounting pins
Husmann: utilize OUTSIDE holes for mounting pins
Kysor Warren, Tyler (or other cooler without mounting holes or a rear bar-mount): skip to **Step 3.3**)



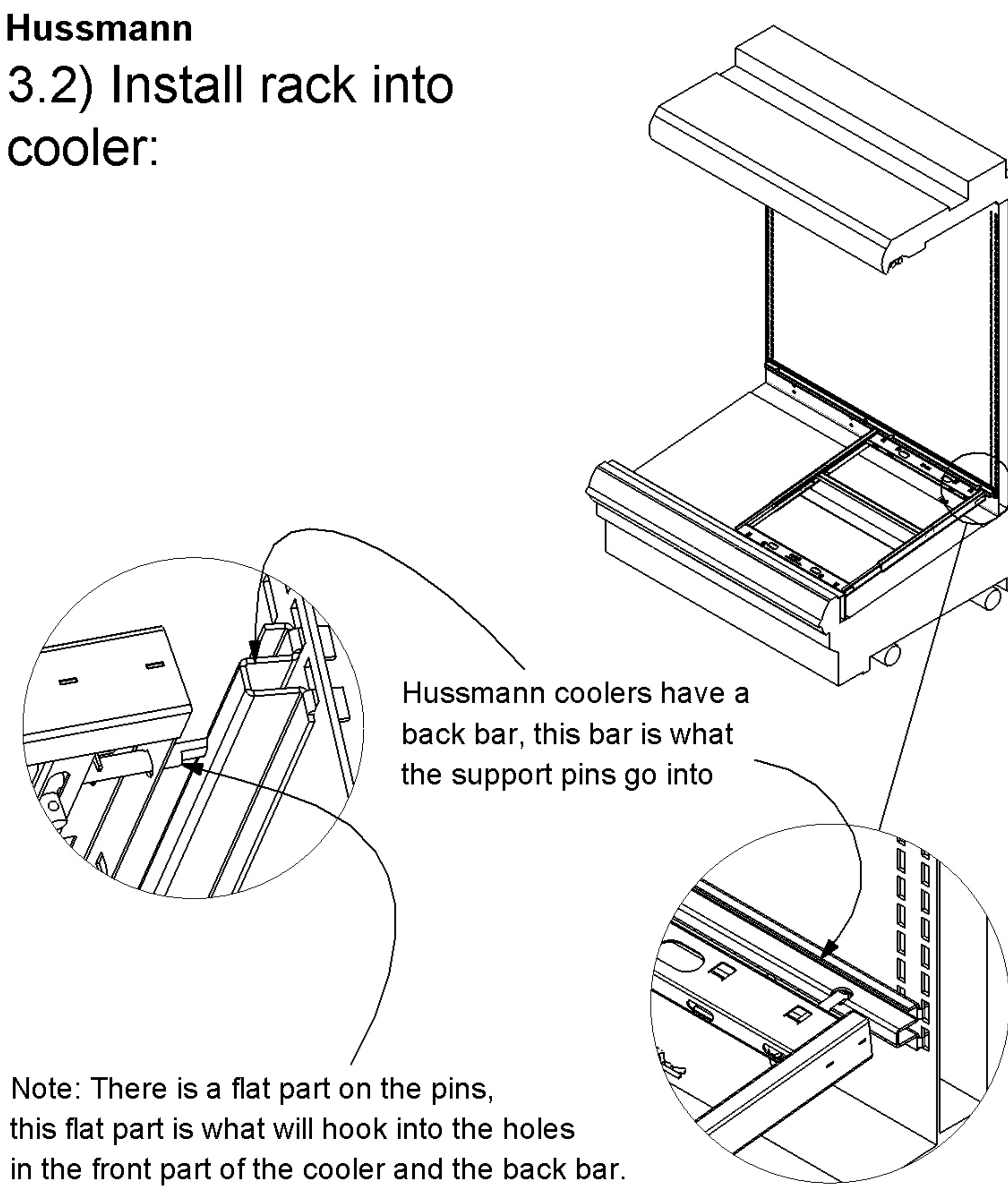
2) Install mounting pins into rack:



HillPhoenix 3.1) Install rack into cooler:



Husmann 3.2) Install rack into cooler:

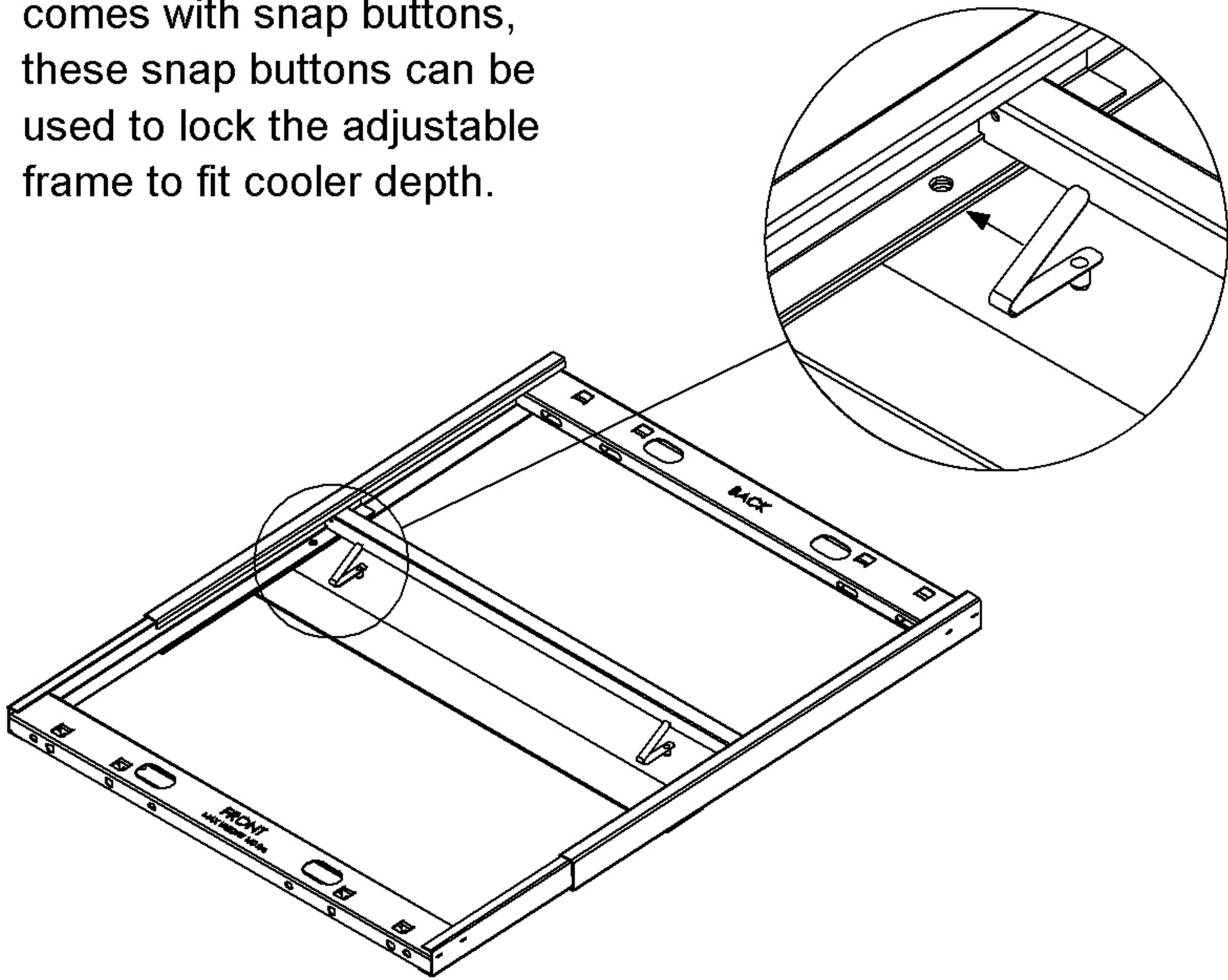


MODOSHELF WELL RACK

Installation Instructions

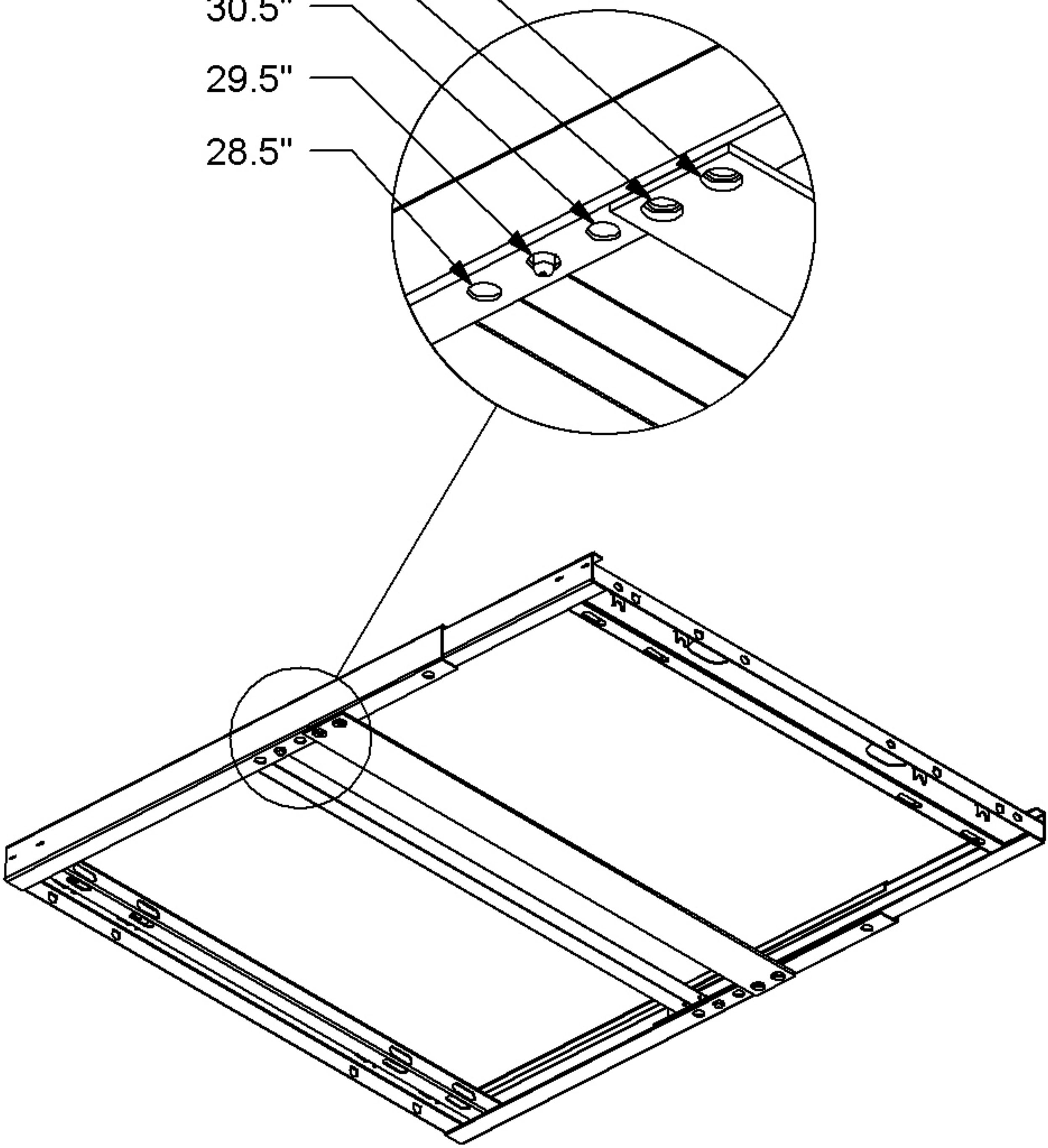
For coolers without mounting holes or a back cross bar

3.3) The hardware pack also comes with snap buttons, these snap buttons can be used to lock the adjustable frame to fit cooler depth.



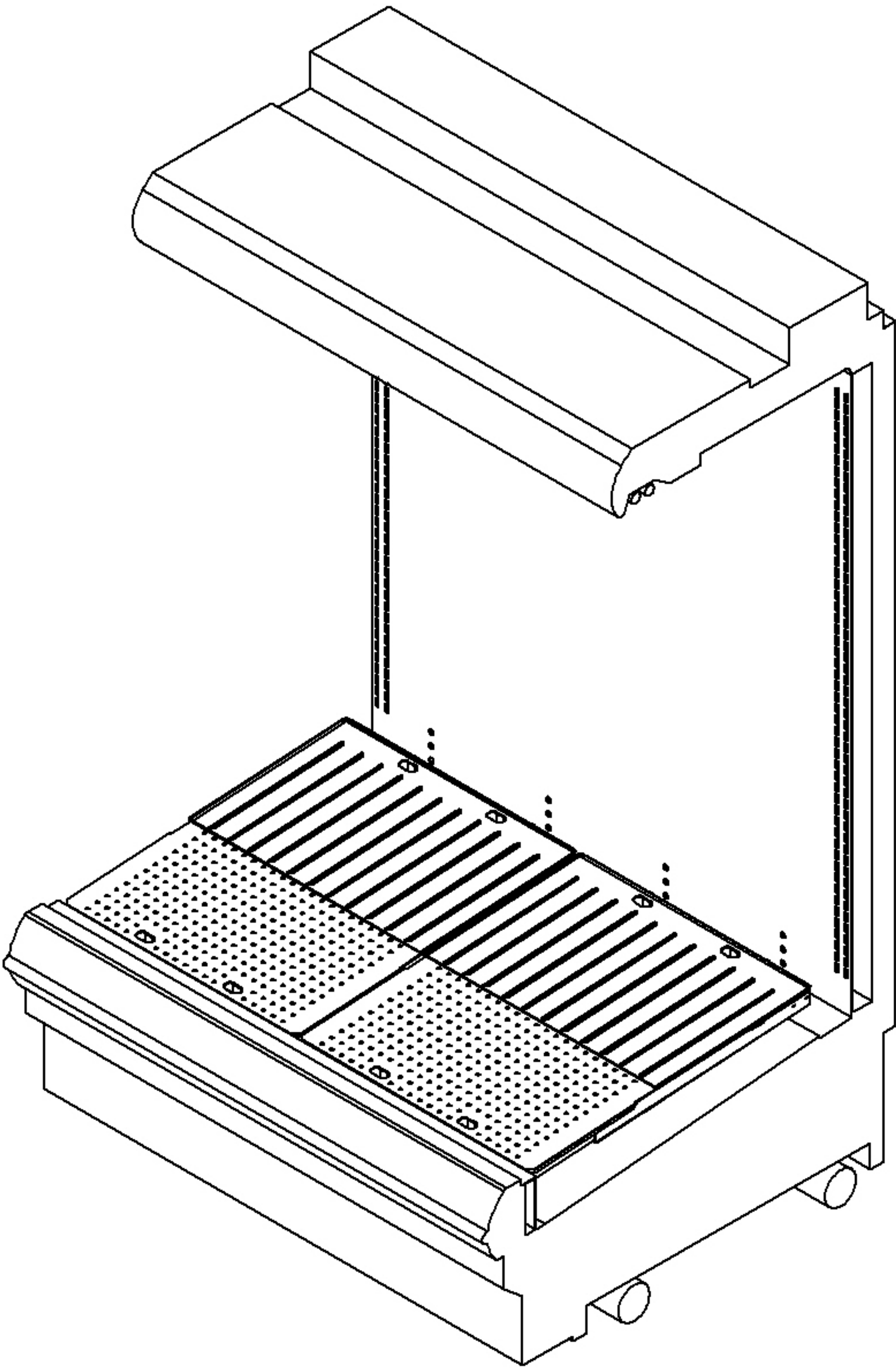
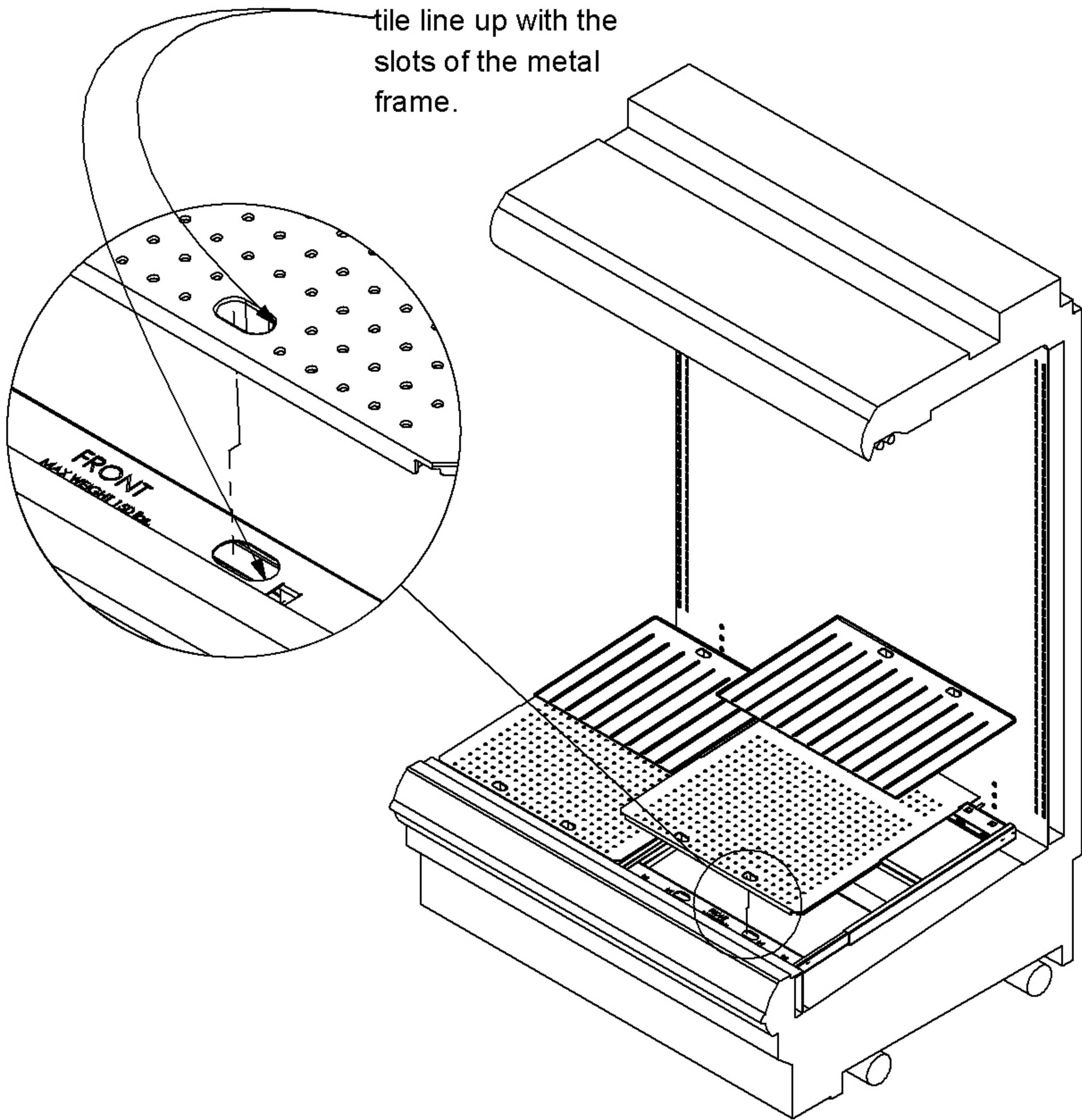
Insert snap button to engage with hole inside side rails and shown

32.5"
31.5"
30.5"
29.5"
28.5"



4) Install large tile with holes in the front first then install back tile.

Note: The slots in the tile line up with the slots of the metal frame.



For more information,
call **800.422.2547**
visit **www.siffron.com**

DRAWING NUMBER: 20026746INS
ITEM NUMBER: 9925510004INS
REV: C

siffron
www.siffron.com

1/20/2023
SHEET 2 OF 2