

# LM Tag™

Light and motion sensor



**siffron.**  
always on

800.422.2547 • [www.siffron.com](http://www.siffron.com)



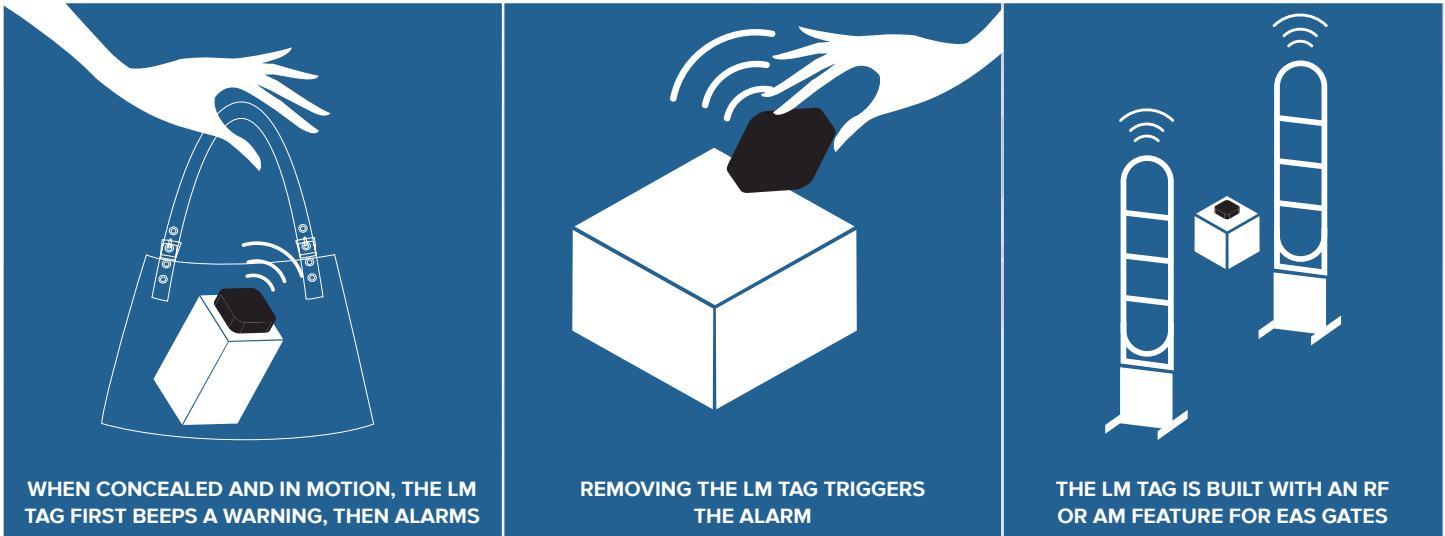


SECURITY

# LM Tags™

## Light and motion sensor

These are all places a would-be thief conceals product. By the time the thief walks out the door, it's too late.



## How it works

The LM Tag™ alarms at the point of concealment, preventing theft before it occurs.

The LM Tag™ attaches to merchandise using a replaceable adhesive backing. LM Tag™ can be adjusted to be visible at first glance on shelf or hidden behind package. If product is tampered, concealed, or removed from store, the alarm will alert staff and help prevent loss.

The LM Tag™ product line features a multitude of loss prevention solutions to prevent

theft in stores, including LM Tag™ Slim, LM Tag™ 3-Alarm and LM Tag™ with SONR™. Other accessories include the LM Tag™ Wrap and LM Tag™ Clip.



LM Tag™ can now interface with SONR™ Echo Box to relay up to 20' and alerts store associates away from the retail area.

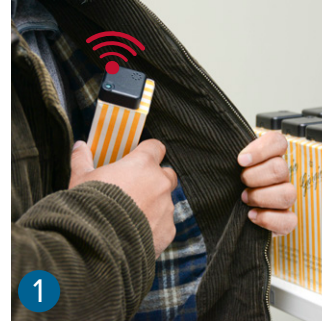


to steal a product  
protected by LM Tag™.

# Design Features

## LM Tag™ Product Family

Product	Benefit
LM Tag™	Light and motion sensor
LM Tag™ Slim	40% slimmer
LM Tag™ Wrap	Secure LM Tag™ to packages
LM Tag™ Clip	Secure LM Tag™ to oddly shaped merchandise
LM Tag™ Corner Adapter	Secure LM Tag™ to packaging
LM Tag™ with SONR	Integrate with SONR™ Echo Box
LM Tag™ 3-Alarm	added EAS gate protection



## Full selection of Loss Prevention Solutions

- 1 LM Tag™**  
Uses the combination of a light sensor and motion detector.
- 2 LM Tag™ with SONR™**  
LM Tags are now available with SONR™ capabilities.
- 3 LM Tag™ 3-Alarm**  
The 3-alarm LM Tag features an EAS Gate sensor.
- 4 LM Tag™ and Wrap**  
Secure packages and other boxed items using the LM Tag™ and Wrap combo.



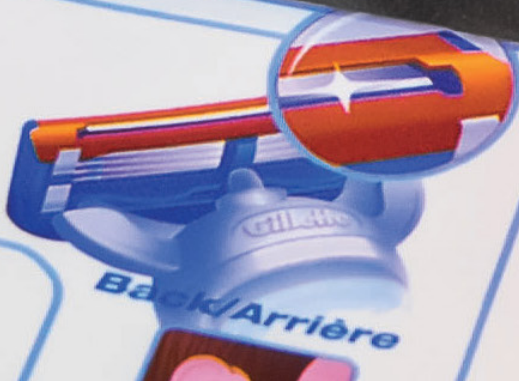


SECURITY

FLEXIBILITY

**5 Blade Shaving System**  
5 blades spaced closely together for a closer shave with less irritation and more comfort.  
**Technologie surface**  
5 lames rapprochées pour une rasage plus doux et moins d'irritation et plus de confort qu'avec le MACH3®.

**Flex Blade...** built into the back of the razor head for tricky places like sideburns, neck and back facial hair.  
...intégrée au dos de la tête de la rasoir pour les endroits difficiles à raser tels que les favoris, le cou et le contour du nez et le contour de la barbe.





## Light, motion and EAS gate sensor

---

The 3-alarm LM Tag features an EAS Gate sensor that will activate the LM Tag alarm when crossing EAS security gates to further prevent shrink by alerting security personnel to store exits.

- ◆ Light, motion and EAS gate sensor
- ◆ Low profile
- ◆ Does not detract from branding
- ◆ 1st Alarm - Light and motion sensors trigger if product is concealed and activates if LM Tag is removed from product.
- ◆ 2nd Alarm - EAS gate alarms when LM Tag passes through.
- ◆ 3rd Alarm - LM Tag alarm triggers when passing through EAS gates at store exit points.



# LM Tag™ with SONR



## LM Tag™ with SONR™ advantages

LM Tags™ are now available with SONR™ capabilities, providing an extra level of protection against theft with remote notification. LM Tags™ interface with the SONR™ Echo Box (installed remotely) to relay product activity notifications to the Echo Box - increasing awareness and response times!

The SONR™ notification can provide additional alerts to store staff or trigger existing store systems like video surveillance or communication devices.

- ◆ Light and Motion sensor
- ◆ Small and Lightweight
- ◆ Effectively deters theft at the point of concealment
- ◆ Notifies store personnel on and off the floor of suspicious activity
- ◆ Alarm activation with:
  - Tag removal from package
  - Concealment time threshold met







## Secure and protect packaged merchandise

LM Tag Duo streamlines product application and setup by offering two easy ways to apply the product to merchandise: by removable adhesive or elastic banding. This provides users with easy ways to setup the LM Tag across multiple surfaces. LM Tag Duo features all standard LM Tag Functions (including the patented Light/Motion sensing), plus reusable banding allows users to reapply LM Tags as much as needed.

- ◆ 3-alarm Protection
- ◆ Dual application: removable adhesive/elastic banding
- ◆ Uses clear banding to avoid distraction from branding. Red banding option available.
- ◆ Features slots to discretely use banding to attach device





DEPENDABILITY





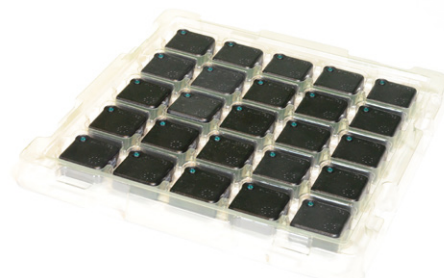
# Accessories



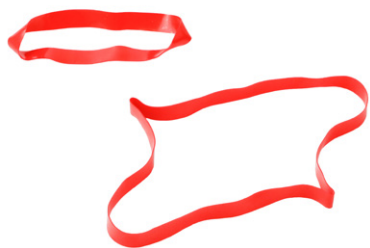
Corner Adapter



Adhesive Pads



Storage Trays



Base Wrap Bands



Echo Box



Adhesive Backing

## Handheld Deactivator

- ◆ Light, easy to carry
- ◆ Compatible with SONIQ™ Alarm Hook product line



## Countertop Deactivator

- ◆ Attaches with adhesive or hardware
- ◆ Can be mounted on top or side of counter





8181 Darrow Road  
Twinsburg, OH 44087

## LM Tag™

### Reduce Theft

Light motion sensor prevents theft in stores.

### Increase Sales

Keep merchandise accessible and shopable to customers.

### Reduce labor costs

Easy to set up and reuse, reducing labor costs.

2025.03.03

## Ordering is easy!

Phone **1.800.422.2547**  
Fax **815.877.7454**  
Web **[www.siffron.com](http://www.siffron.com)**

call toll free in North America  
fax us your purchase order  
buy and find resources online

