

Visi-Bin™

Clear bin displays



siffron™
always on



Visi-Bins™ from siffron are a simple solution for displaying bulk merchandise. Their clear construction provides a clean and attractive presentation of product.

Simple Solutions for Maximum Impact

Increase sales through enhanced product presentation.



Visi-Bins™ are the clear display choice!

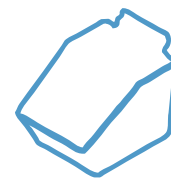
Most buying decisions are made at the point of sale. This means that the way merchandise is displayed has a great impact on the success of selling those items. By making merchandise easy to see and access, impulse sales will increase.

siffron's Visi-Bins™ provide an attractive way to display and highlight your products. Their clear construction means that the product, not the fixture, is the star and shoppers can easily view the available products.

Benefits

- ◆ Adapters for mounting on wide variety of panels, pegboard, slatwall, grid, and glass.
- ◆ Various shapes available for stylistic display for maximum impact.
- ◆ Label holders designed to fit on Visi-Bin front edge.
- ◆ Provides clear view of merchandise.
- ◆ Ideal for bulk items.

Optimal Strength.
Clear Presentation.



Transparent for optimal
product presentation



Create eye-catching product displays

Different styles. Different uses. Maximum sales.



Many different styles and display types

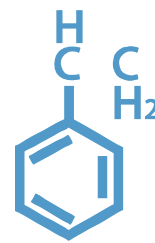
siffron's designed Visi-Bins to maximize the appeal of product merchandising. There are many styles, shapes, sizes and applications to choose from to create the look and presentation that best suits your product.

Visi-Bins can be used with all standard slatwall, pegboard and 3" grid displays. The pegboard adapter is designed to maximize the spacing of the bins across a three or four foot wide section. The grid adapter allows Visi-Bins to be merchandised back-to-back on a single grid panel to maximize display space.

Features

- ◆ Available in a variety of depths.
- ◆ Durable molded construction.
- ◆ Angled opening allows for easy access to product.
- ◆ Use our Universal Mount Price Tag Holder for an attractive and easy way to label bins!
- ◆ Adapters allow Visi-Bins to be mounted onto standard 1" pegboard or 3" grids.
- ◆ Notched back allows bin to extend over upright.

Durable Bins



Made of durable polymers with proven quality - over 1,000,000 bins sold!

Visi-Bin™ Clear Display Bins

Visi-Bin™ 7.5"

RPDMP-65575

6" W x 5.5" H x 7.5" D



Visi-Bin™ 9.5"

RPDMP-65595

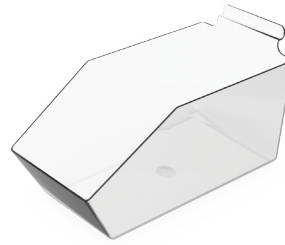
6" W x 5.5" H x 9.5" D



Visi-Bin™ 11.5"

RPDMP-655115

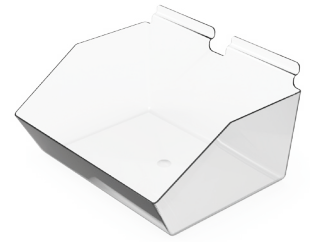
6" W x 5.5" H x 11.5" D



Double-Wide

RPDMP-129555

12" W x 5.5" H x 9.5" D



Arc Style

RPDMP-120606-AR

12" W x 6" H x 6" D



Quarter-Ball

RPDMP-120606-QB

12" W x 6" H x 6" D



Tray

RPDMP-127032

12" W x 3" H x 6.5" D



Cup

RPDMP-404560

4" W x 6" H x 4.5" D



Shelf Edge Mount

RPDMP-120404-SE

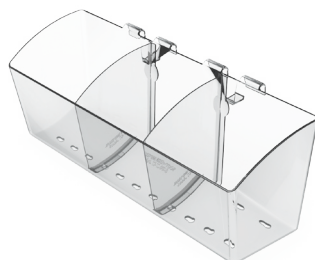
12" W x 4" H x 4" D



Basket for 1" Bar or Grid

RPDMP-140405-FR

14" W x 5" H x 4" D



Tray for 1" Bar or Grid

RPDMP-140425-FR

14" W x 2.5" H x 4" D



Label Holder

RPDMP-L21

6" W x 5.5" H x 9.5" D

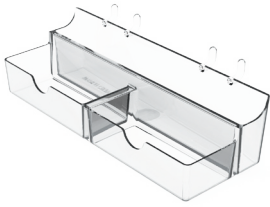


Visi-Bin™ Clear Display Bins & Accessories

Gift Card Tray

RGCT-0001

7.625" W x 2" H x 2.5" D



25 Gift Card Tray

RGCT-0002

3.7" W x 1.92" H x 1.41" D



50 Gift Card Display

RGCT-0005

3.7" W x 1.92" H x 2.16" D



3 Tier Gift Card Tray

RGCT-0003

3.62" W x 4.5" H x 3.67" D



4 Tier Gift Card Tray

RGCT-0004

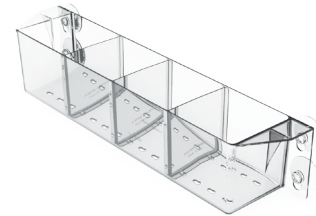
3.62" W x 6" H x 4.875" D



Visi-Mount™

RPDMP-VM16 and RPDMP-VM-DIV

16" W x 3.325" H x 3.75" D



Grid Adapter

RPDMP-GBACK

4.75" W x 2.56" H



Peg Board Adapter

RPDMP-SBACK

4.625" W x 1.375" H



Gift Card Peg Adapter

RGCT-PEG

1.25" W x 1.45" H



Custom Visi-Bin™

siffron offers custom Visi-Bin™ sizes and colors.

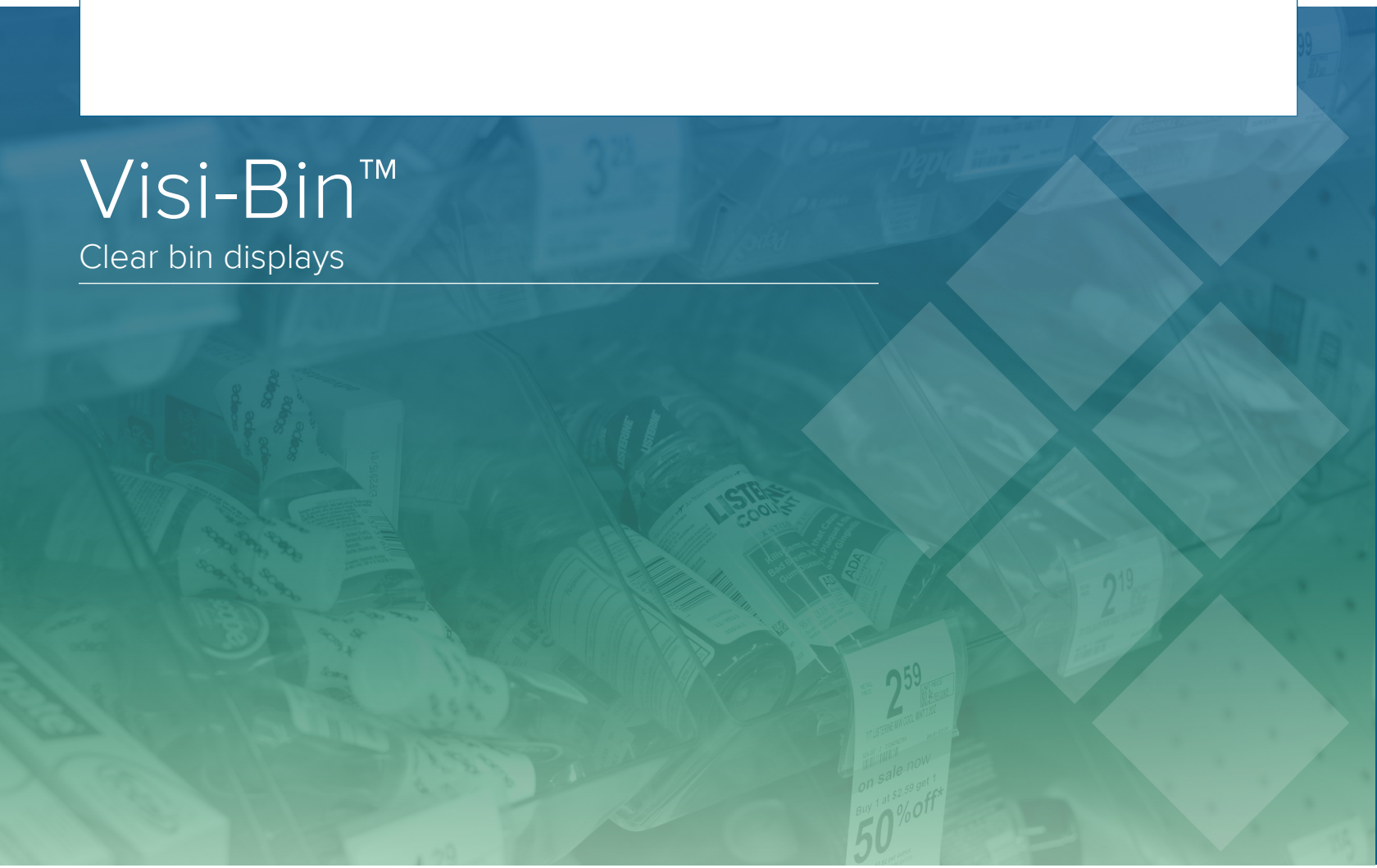
Call today to find out more about Visi-Bin™ or to receive a custom quote!



8181 Darrow Road
Twinsburg, OH 44087

Visi-Bin™

Clear bin displays



Ordering is easy!

Phone **800.422.2547**
Fax **800.422.2502**
Web **www.siffron.com**

call toll free in North America
fax us your purchase order
buy and find resources online

