



Kinetic Mat

Maximize sales and simplify product facing



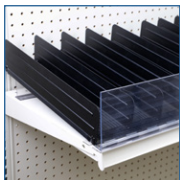
Effortless Product Facing

Designed for regular gondola shelves, Kinetic Mat ensures products slide forward, keeping your shelves consistently front-faced and organized.



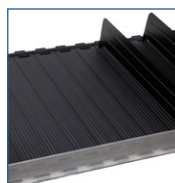
Customize Width Product Lanes

Engineered for durability, Kinetic Mat boasts dividers that lock into place at the front and back to keep products organized and merchandising smoothly.



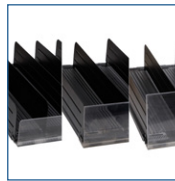
Quick, Tool-Free Installation

Save time and labor with Kinetic Mat easy carton-to-shelf design. Just drop it on the shelf—no tools needed! Enjoy the ease today!



Ultra Slick Surface

Crafted from high impact polystyrene, Kinetic Mat maintains low friction to ensure merchandise stays properly faced and accessible to customers



Multiple Fencing Options

Kinetic Mat configures to handle different product sizes and by customizing divider widths and fence height options.



Strong Shelf Support

Kinetic Mat retaining wall provides ultimate front facing support for heavier products. (requires 4 christmas tree clips 8502477405)

Automated product facing made simple with Kinetic Mat — where functionality meets proven design.

For more information,
call **800.422.2547**
or visit **www.siffron.com**

siffron.
always on

Kinetic Mat



Works with multiple products



Numbered Lanes

Specifications

| Item Number | Description | Dimensions | Pack |
|-------------|--|-------------------|------|
| 4859620002 | Kinetic Mat Gen 2 48"W x 14"D; Black 2" Lens | 48"W x 14"D x 2"H | 2 |
| 4859620003 | Kinetic Mat Gen 2 48"W x 16"D; Black 2" Lens | 48"W x 16"D x 2"H | 2 |
| 4859620004 | Kinetic Mat Gen 2 48"W x 18"D; Black 2" Lens | 48"W x 18"D x 2"H | 2 |
| 4859620005 | Kinetic Mat Gen 2 48"W x 20"D; Black 2" Lens | 48"W x 20"D x 2"H | 2 |
| 4859620006 | Kinetic Mat Gen 2 48"W x 22"D; Black 2" Lens | 48"W x 22"D x 2"H | 2 |
| 4859620007 | Kinetic Mat Gen 2 48"W x 24"D; Black 2" Lens | 48"W x 24"D x 2"H | 2 |
| 4702412320 | Sheet Metal Divider; Black | 2.75" H x 12" L | 30 |
| 4702414320 | Sheet Metal Divider; Black | 2.75" H x 12" L | 30 |
| 4702416320 | Sheet Metal Divider; Black | 2.75" H x 12" L | 30 |
| 4702418320 | Sheet Metal Divider; Black | 2.75" H x 12" L | 30 |
| 4702420320 | Sheet Metal Divider; Black | 2.75" H x 12" L | 30 |
| 4702422320 | Sheet Metal Divider; Black | 2.75" H x 12" L | 30 |
| 4702424320 | Sheet Metal Divider; Black | 2.75" H x 12" L | 30 |
| 4702426320 | Sheet Metal Divider; Black | 2.75" H x 12" L | 30 |
| 4702428320 | Sheet Metal Divider; Black | 2.75" H x 12" L | 30 |
| 4702430320 | Sheet Metal Divider; Black | 2.75" H x 12" L | 30 |
| 4706948000 | RTHL Front Retainer; Clear | 48" L | 10 |
| 9800004147 | RTHL Front Retainer; Clear with Tape | 48" L | 10 |

2025.10.27

For more information,
call **800.422.2547**
or visit **www.siffron.com**

