

FreshRack 2 Lane Dressing Tray

Order the adjustable-width shelf trays and the back-channel kit together to create a pull-out pusher system on your existing shelves. Shelf trays are packed (6) per carton. Each tray is two product facings, so plan the shelf with an even number of facings. For example, 2 trays equal 4 facings and 3 trays equal 6 facings. Back-channels are packed (5) channels per carton.



Shelf Tray



Back Channel

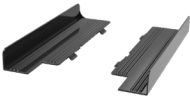


FreshRack 2 Lane Dressing Tray with Wide Walls

For Family Size bottles, order the wide-wall kit with the shelf trays and back-channel kit. Plan to order (1) carton of Wide Wall Kits with each (1) carton of shelf trays.



Shelf Tray



Wide Walls

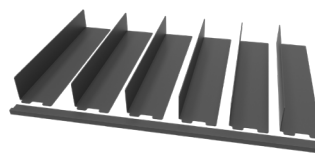


Back Channel



Well Divider System

Order the Well Divider Kit to create defined rows in the well. The kit contains (12) "L" shaped dividers and (4) 24" long front rails. The rail attaches to the front of the wire base in the well. The dividers slide firmly into the front rail to hold the dividers into place. Dividers can be placed anywhere along the rail. Divider dimensions are 27" D x 3.75" H x 3.75" W.


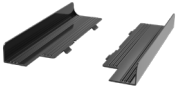



Well Dividers

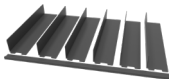


FreshRack™ Shelf Ordering Matrix

FreshRack™ Tray Shelf

	Item No.	Product	Dimensions	Color	Pack
	xxxxxxxxxx	18" Dressing Two Lane Shelf Trays	18" D	Black	6
	xxxxxxxxxx	22" Dressing Two Lane Shelf Trays	22" D	Black	6
	xxxxxxxxxx	18" Wide Wall Kit	For use with Family Sized Bottles and Tubs	Black	6
	xxxxxxxxxx	22" Wide Wall Kit	For use with Family Sized Bottles and Tubs	Black	6
	4853694533	Standard Back Channel Carton	48"	Black	5

Well Dividers

	Item No.	Product	Dimensions	Color	Pack
	4103142188	Well Divider Kit	27" D x 3.75" H x 3.75" W	Black	(12) Dividers (4) Front Rails