

Meats

FreshRack™ 2 Lane Tray Shelf

Order the adjustable-width shelf trays and the back-channel kit together to create a pull-out pusher system on your existing shelves. Shelf trays are packed (6) per carton. Each tray is two product facings, so plan the shelf with an even number of facings. For example, 2 trays equal 4 facings and 3 trays equal 6 facings. Back-channels are packed (5) channels per carton.



Shelf Tray

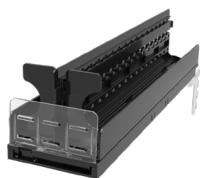


Back Channel



FreshRack™ 2 Lane Tray Grid

Order the adjustable-width grid trays and the grid kit together to create a pull-out pusher system. Grid trays are packed (6) per carton. Each tray is two product facings, so plan the row with an even number of facings. For example, 2 trays equal 4 facings and 3 trays equal 6 facings. Grids are packed (1) per carton with hardware. Several grid dimensions are offered to fit any refrigerated case. See ordering matrix or contact siffron for a recommendation.



Grid Tray



Grid

