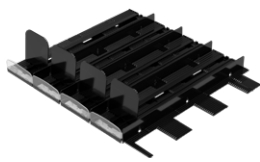


FreezerRack™ Shelf + End Walls

Order the FreezerRack Trays and the End Walls together to create a shelf pusher system. Trays are packed (16) per carton. Each tray is one product facing. End Walls are packed (10) per carton and are used in two locations: Start & end of each row and at shelf elevation changes to stop and start a new run.



FreezerRack

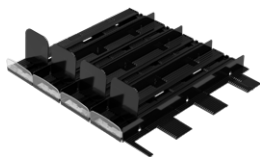


End Walls



FreezerRack™ Shelf + Tall Walls

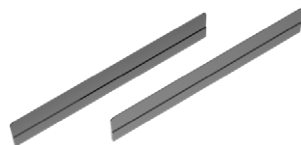
Accessory: Use FreezerRack Tall Walls to increase divider height to better divide tall, bagged items. They sleeve onto the divider wall and lock into place. Tall walls are packed 24/carton. Contact siffron with questions or for assistance.



FreezerRack






End Walls



End Walls



FreezerRack™ Shelf

	Item No.	Product	Dimensions	Color	Pack
	4850684560	22" FreezerRack Tray 16/ctn	22" D x 5" - 11.5" W	Black	16
	4853605480	22" FreezerRack Tray 16/ctn	22" D x 5" - 11.5" W	White	16
	4858427256	24" FreezerRack Tray 16/ctn	24" D x 5" - 11.5" W	Black	16
	4859758293	24" FreezerRack Tray 16/ctn	24" D x 5" - 11.5" W	White	16
	4858222880	22" FreezerRack End Walls 10/ctn	22"	Black	16
	4851840220	22" FreezerRack End Walls 10/ctn	22"	White	16
	4854096431	24" FreezerRack End Walls 10/ctn	24"	Black	10
	4852596096	24" FreezerRack End Walls 10/ctn	24"	White	10
	4851031810	Extended Divider Wall 24/ctn	22"	Black	24
	4851451951	Extended Divider Wall 24/ctn	22"	White	24