

# Fresh-Fit® Thin Profile Shelving System

Maximize impact with minimal use of space



**siffron**™  
always on

800.422.2547 • [www.siffron.com](http://www.siffron.com)



# VISIBILITY

# Improve your fresh area presentation



## Fresh-Fit® Thin Profile Shelving System

Although located along the perimeter, the fresh area is clearly the heart of every store. And, with the increasing demand for variety and convenience, paired with a desire for local, organic, sustainable and whole foods, the fresh area continues to grow.

Since it can be daunting to effectively and attractively display such a wide array of produce and prepared foods, a comprehensive shelving system is imperative – enter the **Fresh-Fit® Thin Profile Shelving System**.

Utilizing minimum space for maximum impact, the system is nearly invisible, allowing for a full view of product. Thin profile shelves transform a standard produce section into a multi-tiered display featuring the ultimate flexibility in product presentation.

## Increase visibility



Allura™ LED lighting for Fresh-Fit® Thin Profile features a waterproof design that ensures durable, long-lasting illumination.

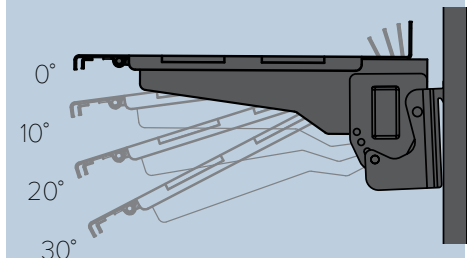
# Fresh-Fit® Thin Profile Shelving System



## Features

- ◆ Virtually invisible to allow full view of product
- ◆ Variety of shelf sizes allows flexibility of configurations
- ◆ Shelves can be adjusted to four angles: 0°, 10°, 20° and 30°
- ◆ Lightweight system is easy to install and reset
- ◆ Product Stop is notched to ensure a secure fit in shelf slots
- ◆ Baffles control and direct air flow to maintain freshness
- ◆ Several product facing systems can be added
- ◆ Waterproof Allura LED Lighting

Shelves can be adjusted to four angles:



# Where is Fresh-Fit® used?

Since both the Grid Assembly and Mount Bar Assembly fit into most case and gondola standards, the Fresh-Fit® Thin Profile Shelving System can be used to display a wide range of bulk and packaged products throughout the store.

## Produce

From bulk fruits and vegetables to packaged produce and salad dressings, the system is ideal for merchandising most items commonly displayed in cooler cases.



## Prepared Foods

Packaged prepared foods can be a challenge to merchandise effectively in coolers. Thin Profile Shelves can be angled or product facing systems can be added to ensure first in, first out rotation.



## Deli

Packaged meats and cheeses can be effectively displayed by adding a product facing system or Peghook Mount Bar to keep products organized and easily accessible.



## Other Departments

The innovative system was designed to fit cooler case uprights as well as standard gondola uprights, making it flexible enough to accommodate most items and categories throughout the store.



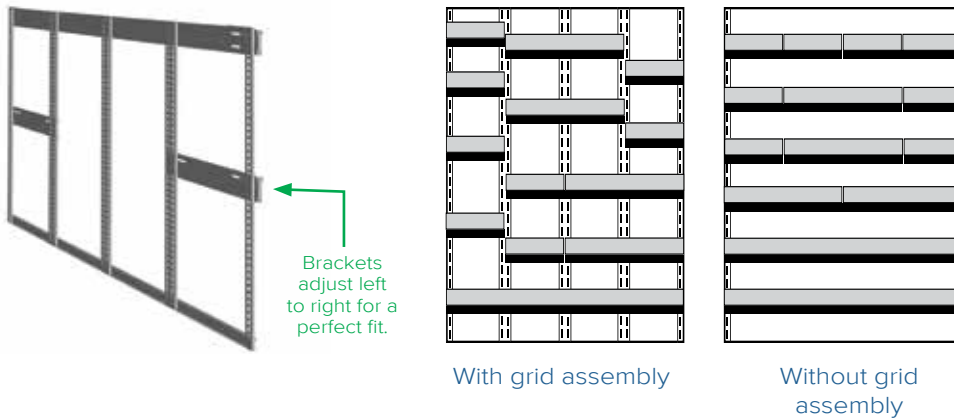
Shown with NEXT® 2.0 product facing system



# EFFICIENCY

## Grid Assembly

Most standard refrigerated cases can only accommodate 48" wide shelving due to the placement of mounting holes at four foot intervals. What makes the Fresh-Fit system unique is a grid that fits into the case standards and has mounting holes at 12" intervals. The grid provides the flexibility to accommodate a variety of product sizes and customer demands.



## Mount Bar Assembly

To customize for specific products, Thin Profile Shelves can be set at four angles for perfect presentation. Not only does this create visual interest, it also keeps product faced for improved visibility and easy customer access.



## Thin Profile Shelves

Utilizing minimum space for maximum impact, the innovative shelves are nearly invisible to allow full view of product. Shelves are available in three widths and four depths for the ultimate in flexibility.

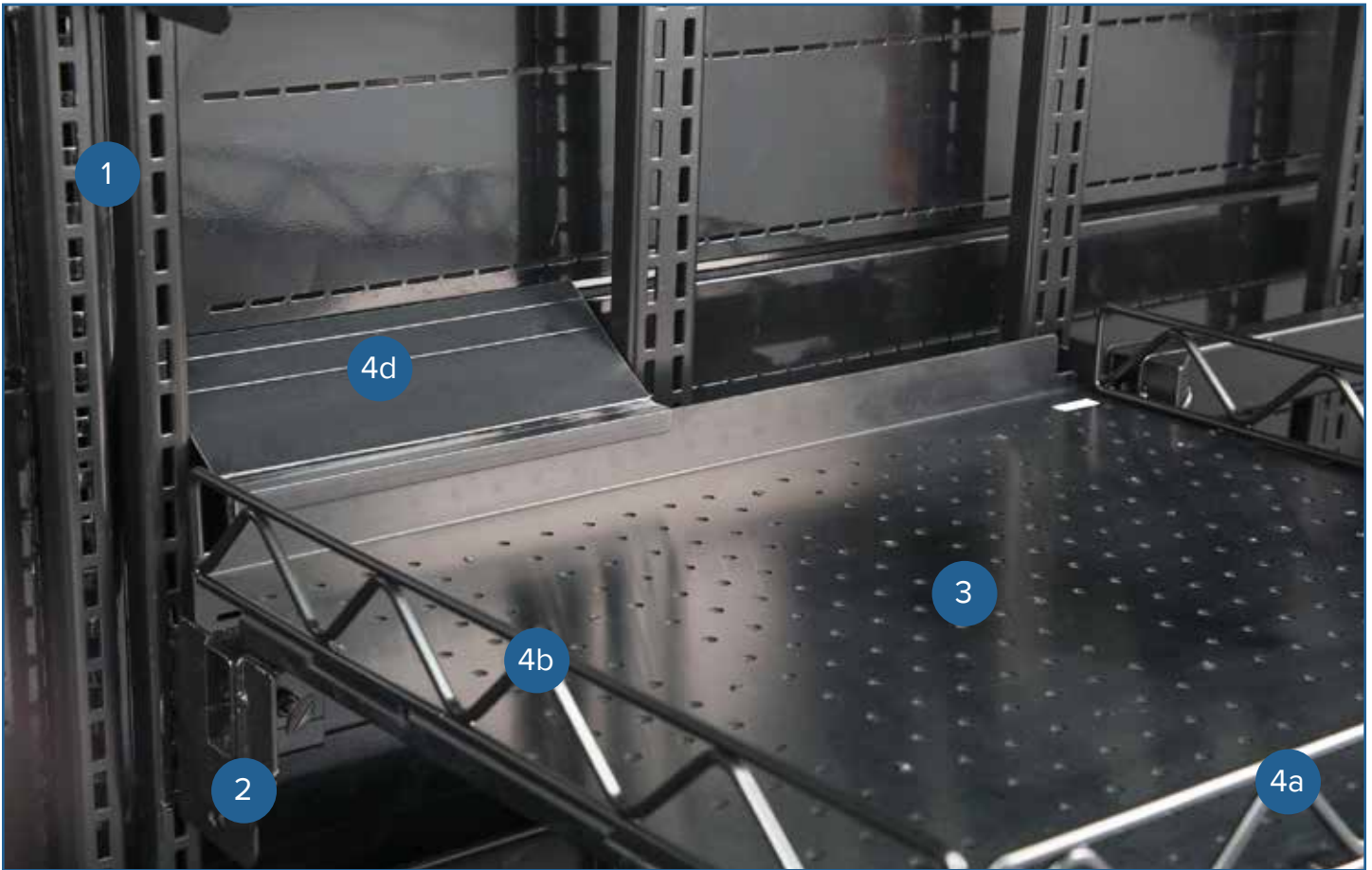


Mount Bar Style



Direct  
Hook-In Style

# Components



- 1 Grid Assembly
- 2 Mount Bar Assembly
- 3 Thin Profile Shelf
- 4 Accessories
  - a. Product Stop
  - b. Divider
  - c. Inventory Blocker
  - d. Baffle
  - e. Allura™ LED Lighting
  - f. Curved Tray
  - g. Serpentine Shelf Extender
  - h. Sign holders
- 5 Accessories - for Grid
  - a. Peg Hook Mount Bar
- 6 Accessories - for Mount Bar
  - a. Thin Profile Mod Pod
  - b. Vacuum-Formed Bin and Frame
- 7 Product Facing
  - a. NEXT® 2.0
  - b. PowerZone® Kwik-Set™
  - c. PowerZone® Sure-Set™
  - d. PowerZone® Pre-Set™

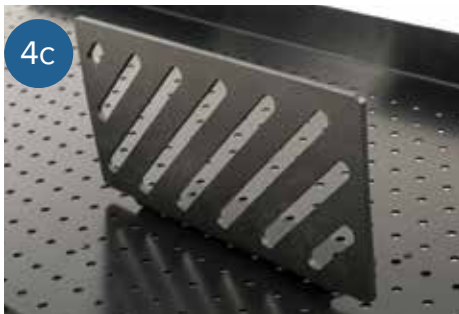
Break-Away Baffle can be modified to 4.25", 3.75", or 3" depths.





# Shelf Accessories

Customize Thin Profile Shelves with a wide selection of optional accessories.



**4c**  
Product Stops, Dividers,  
Inventory Blocker  
Keep product organized



**4d**  
Baffle  
Controls and directs air flow to  
help maintain product freshness



**4e**  
Allura™ LED Lighting  
Features a waterproof design to ensure  
durable, long-lasting illumination



**4f**  
Curved Tray  
Sits over lip of 1" H Product Stop  
and rests on Thin Profile Shelf



**4g**  
Serpentine Shelf Extender  
Attaches to Thin Profile Shelf to  
add style and visual interest



**4h**  
Sign Holders  
Display promotional pricing  
and product information

## Grid/Mount Bar Accessories

Innovative accessories fit directly on the Grid Assembly or Mount Bar.



**5a**  
5a: Peghook Mount Bar  
Fits directly into Grid Assembly to  
display pegged, packaged items



**6a**  
6a: Thin Profile Mod Pod  
Fits onto Mount Bar to add dimension  
and visual interest to bulk displays



**6b**  
6b: Vacuum-Formed Bin & Frame  
Hooks onto Mount Bar to  
organize smaller bulk items



# FLEXIBILITY

Shown with NEXT® 2.0 product facing system

# Product Facing

To further organize packaged products and ensure first-in, first-out functionality, a product facing system can be added to Thin Profile Shelves (NEXT® 2.0 attaches directly to Mount Bar). These systems contain a spring-loaded pusher that automatically advances product to keep products faced and easily accessible to customers.

## PowerZone® Kwik-Set™

A component-based merchandising system that accommodate the widest range of product shapes and sizes throughout the store.



## PowerZone® Sure-Set™

Popular pre-assembled kits are easy to order and eliminate the need for manual configuration by store personnel.



## PowerZone® Pre-Set™

A self-facing system that ensures first-in, first-out product rotation. Ideal for salads, bagged vegetables, and herbs.



## NEXT® 2.0

Allows retailers to increase space and improve product visibility. Items remain faced and visible to the customer for easy product selection.





8181 Darrow Road  
Twinsburg, OH 44087

## Fresh-Fit® Thin Profile Shelving System

### Maximize merchandising space

---

Utilizing minimal use of space for maximum impact, the innovative system is nearly invisible, allowing for a full view of product and easy accessibility.

### Decrease shrink

---

A wide variety of shelf widths and depths allows you to accommodate specific product demand, while optional dividers, inventory blockers and baffles help maintain product freshness.

### Reduce labor

---

The comprehensive system is simple to install, reset and clean, and can be easily customized with a host of complementary accessories including product facing systems.

## Ordering is easy!

---

Phone **800.422.2547**  
Fax **1.800.422.2502**  
Web **www.siffron.com**

call toll free in North America  
fax us your purchase order  
find and buy resources online

